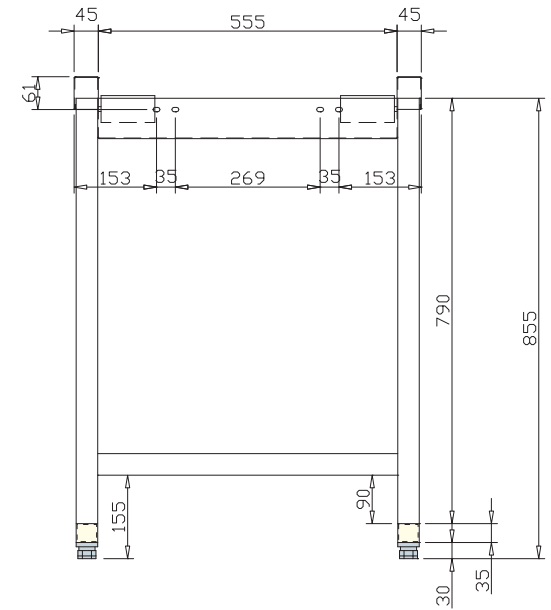
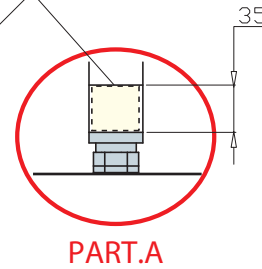
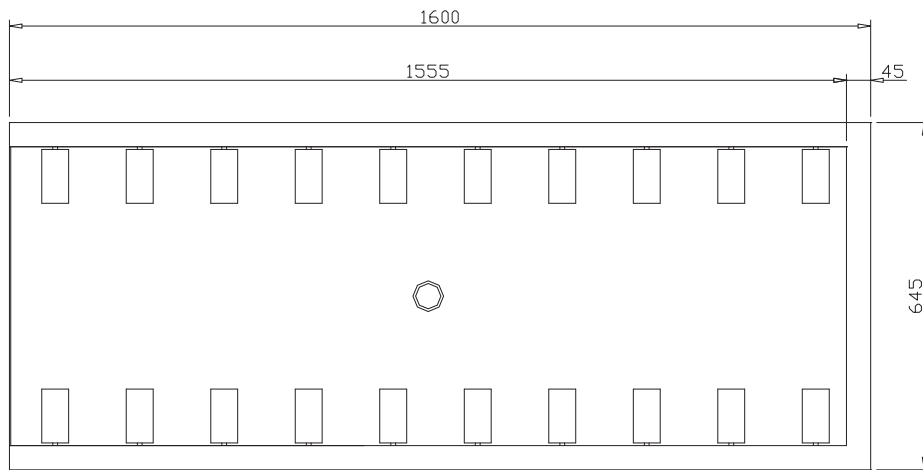




**⚠️ 👁️** TAGLIO DA UTILIZZARE PER ASPORTO DEL PEZZO TRATTEGGIATO, E UTILIZZO DEL TAVOLO A :  
**H min 825 mm - H max 880 mm**  
 USE THE DOTTED LINE TO REMOVE THE EXTRA LENGHT:  
**H min 825 mm - H max 880 mm**  
 COUPURE PIÈCE POINTILLÉ POUR UTILISATION DU TABLE  
**À : H min 825 mm - H max 880 mm**



ALTEZZA DI LAVORO PER SCORRIMENTO CESTO: **H min 860 - H max 915 mm**  
 USEFUL WORKING HEIGHT TO SLIDE BASKET: **H min 860 - H max 915 mm**  
 HAUTEUR GLISSEMENT PANIER: **H min 860 - H max 915 mm**



 	Cod.interno / File : LC-96/1A
	Scala : ---
	Disegnatore : AS
	Data : 08/03/2016
	Rev. : 0.0
Tavola : 1/1	

Le informazioni contenute nel presente documento corrispondono alla definizione sul prodotto alla data di emissione dello stesso.  
 The manufacturer reserves the right to make alterations to the product without notice.